



Solenoid valve 2/2 way N.C. Direct acting

212A3KV15
÷
212A2KV55

PRESENTATION:

Direct acting S.V. for interception of fluids compatible with the construction materials.

Minimum operational pressure is not required.

The materials used and the tests carried out ensure maximum reliability and duration.

USE: Automation
Heating

PIPES: G 1/8 - G 1/4

COILS: 8W - Ø 13
BDA - BDS - BSA 155°C (class F)
BDF - BDV 180°C (class H)
12W - Ø 13
UDA 155°C (class F)
14W - Ø 13
GDH - GDV 180°C (class H)

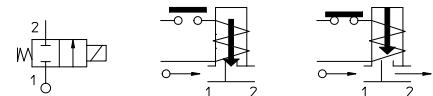
MOULDING AND BOBBIN ARE MADE BY 100% VIRGIN MATERIAL.



| Gaskets | Temperature | | Medium |
|-------------------------|-------------|--------|---|
| V=FKM (fluoroelastomer) | - 10°C | +140°C | Mineral oils (2°E), gasoline gas oil, fuel oils (7°E) |
| B=NBR (nitrile rubber) | - 10°C | + 90°C | Air, inert gas, water |

Max. allowable pressure (PS) 40 bar
Ambient temperature:
with coil class **F** - 10°C + 60°C
with coil class **H** - 10°C + 80°C

For seals other than FKM replace the letter "V" with the ones corresponding to the other seals. E.I. 212A2KB15.



| Pipe ISO 228/1 | Code | Max viscosity | | Ø mm | Kv l/mn | Power (watt) | Pressure | | | | |
|-------------------|-----------|---------------|-----|---------|------------|-----------------|------------|---------------------------|----|----|----|
| | | cSt | °E | | | | min bar | M.O.P.D. AC bar DC bar | | | |
| G 1/8 | 212A3KV15 | 12 | ~ 2 | 1,5 | 1,4 | 8 | 0 | 30 | 18 | | |
| | | | | | | | | 22 | 16 | | |
| | 212A3KV20 | 37 | ~ 5 | 2 | 2 | 12 | | 35 | 30 | | |
| | | | | | | 14 | | 14 | 9 | | |
| | 212A3KV25 | 53 | ~ 7 | 2,5 | 3,2 | 8 | | 30 | 25 | | |
| | | | | | | 12 | | 10 | 6 | | |
| | 212A3KV30 | 53 | ~ 7 | 3 | 4 | 8 | | 25 | 18 | | |
| | | | | | | 12 | | 20 | 20 | | |
| | 212A3KV45 | 53 | ~ 7 | 4,5 | 6,5 | 8 | | 5 | 2 | | |
| | | | | | | 12 | | 12 | 7 | | |
| | G 1/4 | 212A2KV15 | 12 | ~ 2 | 1,5 | 1,4 | | 8 | 0 | 30 | 18 |
| | | | | | | | | | | 22 | 16 |
| 212A2KV20 | | 37 | ~ 5 | 2 | 2 | 12 | 35 | 30 | | | |
| | | | | | | 14 | 14 | 9 | | | |
| 212A2KV25 | | 53 | ~ 7 | 2,5 | 3,2 | 8 | 30 | 25 | | | |
| | | | | | | 12 | 10 | 6 | | | |
| 212A2KV30 | | 53 | ~ 7 | 3 | 4 | 8 | 25 | 18 | | | |
| | | | | | | 12 | 20 | 20 | | | |
| 212A2KV45 | | 53 | ~ 7 | 4,5 | 6,5 | 8 | 5 | 2 | | | |
| | | | | | | 12 | 12 | 7 | | | |
| 212A2KV55 | | 53 | ~ 7 | 5,5 | 9 | 8 | 3 | 1 | | | |
| | | | | | | 12 | 7 | 2,5 | | | |
| | | | | | | | | 10 | 5 | | |

The "ODE" reserves the right to carry out technical and aesthetic modifications without prior notification.

MATERIALS:

Body Brass - UNI EN 12165 CW617N
Welded armature tube Stainless steel AISI series 300 +
 Brass - UNI EN 12165 CW617N
Fixed core Stainless steel AISI series 400
Plunger Stainless steel AISI series 400
Phase displacement ring Copper - Cu 99,9%
Spring Stainless steel AISI series 300
Seal Standard: V=FKM
 On request: B=NBR

Orifice:
 < 3 mm **Insert slot** Stainless steel AISI series 300
 > 3 mm Brass - UNI EN 12165 CW617N

On request:
Connector Pg 9 or Pg 11
Connector conformity ISO 4400

FEATURES:

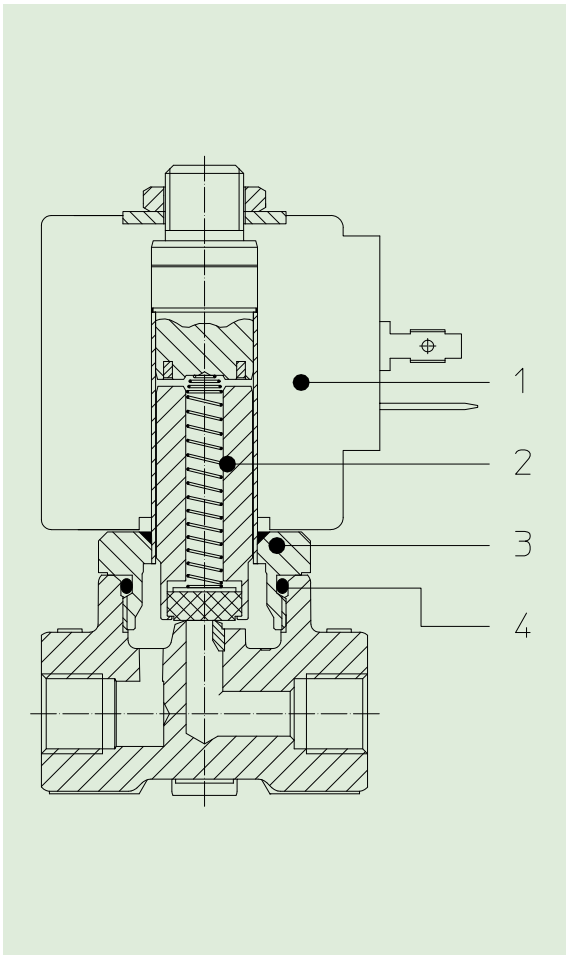
Electrical conformity IEC 335
Protection degree IP 65 EN 60529 (DIN 40050)
 with coil fitted by connector.

SPARE PARTS:

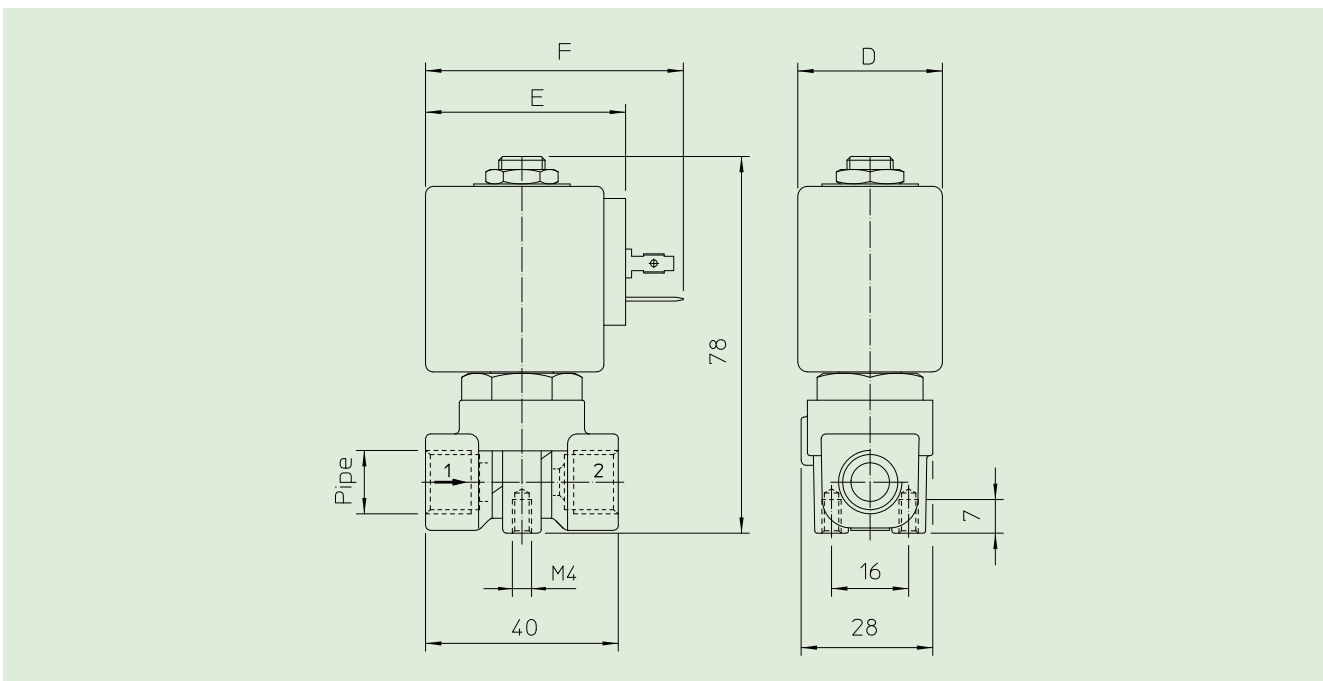
- 1. Coil:**
See coils list
- 2. Complete plunger:**
Code R450898/V
- 3. Complete armature tube:**
Code R450691
- 4. Gasket O-Ring:**
Code R990000/V

KIT:

KS130KV55-F= **2+3+4**



DIMENSIONS:



| Type | Pipe ISO 228/1 |
|---------|-------------------|
| 212A3KV | G 1/8 |
| 212A2KV | G 1/4 |

| COIL TYPE | POWER ABSORPTION | | | DIMENSIONS | | |
|--------------|------------------|--------------|----------------|------------|---------|---------|
| | W == | Hold VA ~ | Inrush VA ~ | D mm | E mm | F mm |
| B | 8 | 14,5 | 25 | 30 | 42 | 54 |
| U | 12 | 23 | 35 | 36 | 48 | 60 |
| G | 14 | 27 | 43 | 52 | 55 | 67 |