



Solenoid valve 2/2 way N.C. Combined operation

21HF6K0B250

÷

21HF8K0B400

PRESENTATION:

Combined operation S.V. for interception of fluids compatible with the construction materials.

Minimum operational pressure is not required.

The materials used and the tests carried out ensure maximum reliability and duration.

USE: Automation
Heating

PIPE: G 1 - G 1 1/2

COILS:
8W - Ø 13
BDA - BDS - BSA 155°C (class F)
BDF - BDV 180°C (class H)
12W - Ø 13
UDA 155°C (class F)
14W - Ø 13
GDH - GDV 180°C (class H)

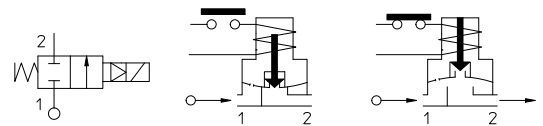
IMOULDING AND BOBBIN ARE MADE BY 100% VIRGIN MATERIAL.

Max. allowable pressure (PS) 16 bar
Ambient temperature:
with coils class **F** - 10°C + 60°C
with coils class **H** - 10°C + 80°C



Gaskets	Temperature		Medium
B =NBR (nitrile rubber)	- 10°C	+ 90°C	Air, inert gas, water
E =EPDM (ethylene-propylene)	- 10°C	+ 140°C	Water, steam
V =FKM (fluoroelastomer)	- 10°C	+140°C	Mineral oils (2°E), gasoline gas oil

For seals other than FKM replace the letter "V" with the ones corresponding to the other seals. E.I. 21HF6K0B250.



Pipe ISO 228/1	Code	Max viscosity		Ø mm	Kv l/mn	Power (watt)	Pressure		
		cSt	°E				min bar	M.O.P.D. AC bar DC bar	
G 1	21HF6K06 250	12	~ 2	25	140	8	0	16	5
						12			16
						14			-
G 1 1/4	21HF7K06 350	12	~ 2	35	270	8	0	16	-
						12			-
						14			6
G 1 1/2	21HF8K06 400	12	~ 2	40	280	8	0	16	-
						12			-
						14			6



CE Approval

(Pressure Equipment Directive 97/23/CE)

for S.V. 21HF7÷21HF8

The "ODE" reserves the right to carry out technical and aesthetic modifications without prior notification.

MATERIALS:

Body	Brass - UNI EN 12165 CW617N
Armature tube	Stainless steel AISI series 300
Fixed core	Stainless steel AISI series 400
Plunger	Stainless steel AISI series 400
Phase displacement ring	Copper - Cu 99,9%
Spring	Stainless steel AISI series 300
Seal	Standard: V=FKM On request: E=EPDM B=NBR
Orificie	Brass - UNI EN 12165 CW617N

On request:

Connector

Pg 9 o Pg 11

Connector conformity

ISO 4400

FEATURES:

Electrical conformity

IEC 335

Protection degree

IP 65 EN 60529 (DIN 40050)
with coil fitted by connector.

SPARE PARTS:

1. Coil:

See coils list

6. Gasket O-Ring:

G 1 Code R990002/V

2. Complete armature tube:

Code R450603

3. Gasket O-Ring:

Code R990000/V

4. Gasket O-Ring:

G 1 Code R990153/V

G 1 1/4+G 1 1/2 Code R992061/V

5. Complete diaphragm with plunger:

G 1 Code R452269/V

G 1 1/4+G 1 1/2 Code R452395/V

MAINTENANCE KIT:

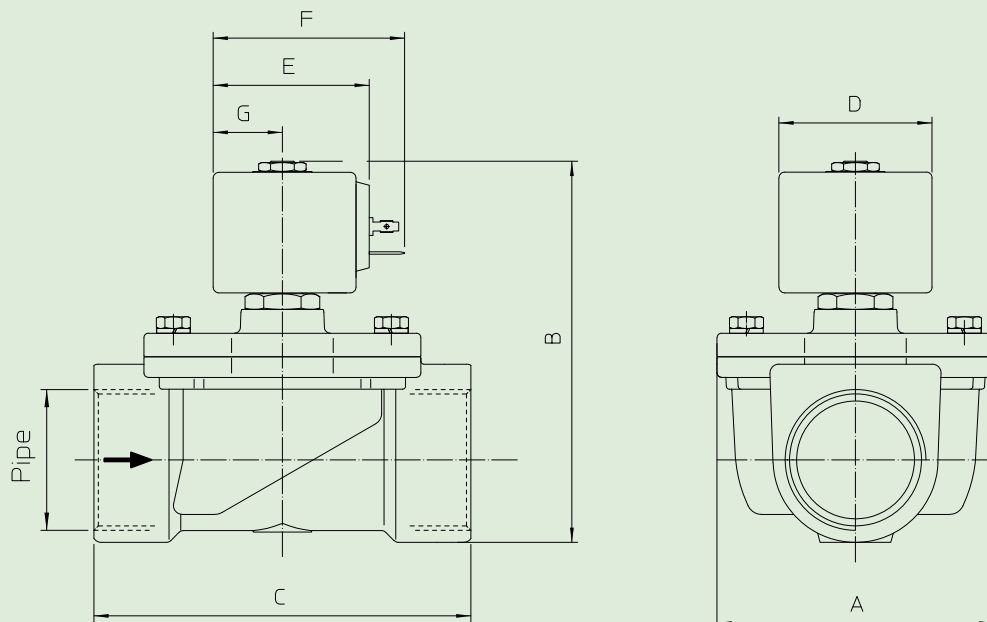
G 1

KTGHF5K0V20= 4+5+6

G 1 1/4+G 1 1/2

KTGHF7K0V35=4+5

DIMENSIONS:



Type	Pipe ISO 228/1	A mm	B mm	C mm
21HF6K06 250	GF	65	110	104
21HF7K0B350	G 1 1/4	94	130	128
21HF8K0B400	G 1 1/2			

COIL TYPE	POWER ABSORPTION			DIMENSIONS		
	W ==	Hold VA ~	Inrush VA ~	D mm	E mm	F mm
B	8	14,5	25	30	42	54
U	12	23	35	36	48	60
G	14	27	43	52	55	67