



# Solenoid valve 2/2 way N.C. With piston pilot control

21YW4K0T130

÷

21YW6K0T250

## PRESENTATION:

S.V. with pilot control for interception of fluids compatible with the construction materials.

A minimum operational pressure of 0,9 bar is required.

The materials used and the tests carried out ensure maximum reliability and duration.

**USE:** Hot water, Steam

**PIPES:** G 1/2 - G 1

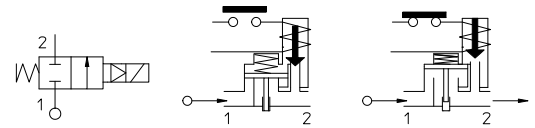
**COILS:** 8W - Ø 13  
BDF - BDV 180°C (class H)

**MOULDING AND BOBBIN ARE MADE BY 100% VIRGIN MATERIAL.**

Max. allowable pressure (PS) 25 bar  
Ambient temperature: - 40°C + 80°C



Gaskets	Temperature		Medium
T=PTFE (polytetrafluorethylen)	- 40°C	+180°C	Steam, hot water



Pipe ISO 228/1	Code	Max viscosity		Ø mm	Kv l/mn	Power (watt)	Pressure		
		cSt	°E				min bar	M.O.P.D. AC bar DC bar	
G 1/2	21YW4K0T130	-	-	13	50	8	0,9	10	10
G 3/4	21YW5K0T190			19	90				
G 1	21YW6K0T250			25	160				

The "ODE" reserves the right to carry out technical and aesthetic modifications without prior notification.

**MATERIALS:**

**Body** Brass - UNI EN 12165 CW617N  
**Armature tube** Stainless steel AISI series 300  
**Fixed core** Stainless steel AISI series 400  
**Plunger** Stainless steel AISI series 400  
**Phase displacement ring** Copper - Cu 99,9%  
**Spring** Stainless steel AISI series 300  
**Piston seal** Modified PTFE  
**Main seal** Glassfiber reinforced T=PTFE  
**Pilot seal** PTFE  
**Orifice** Brass - UNI EN 12165 CW617N

**On request:**

**Connector** Pg 9 o Pg 11  
**Connector conformity** ISO 4400

**FEATURES:**

**Electrical conformity** IEC 335  
**Protection degree** **IP 67 EN 60529 (DIN 40050)**  
 with coil fitted by connector dedicated

**SPARE PARTS:**

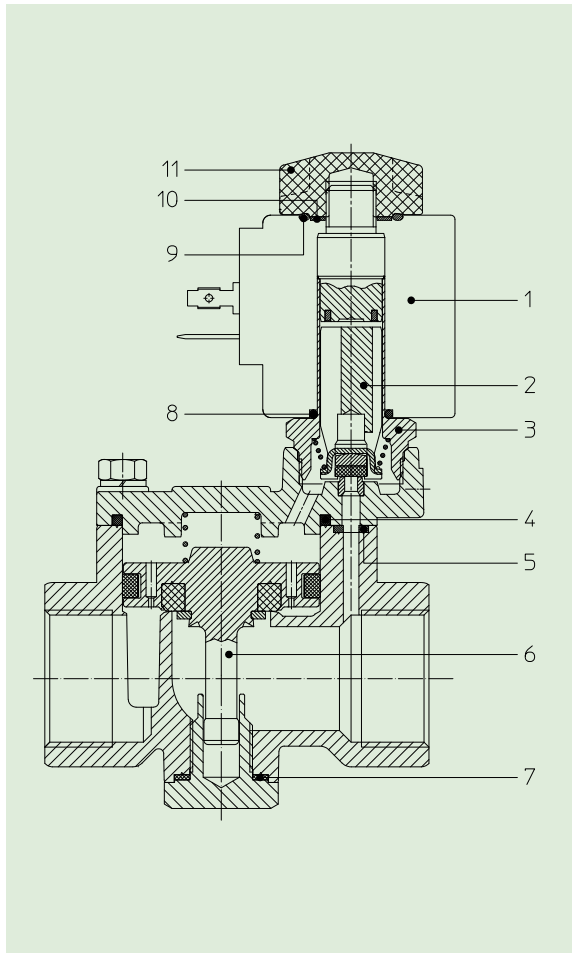
- |   |  |
|---|--|
| <b>1. Coil:</b><br>See coils list   | <b>6. Complete piston:</b><br>G 1/2 Code R452604<br>G 3/4 Code R452547<br>G 1 Code R452548 |
| <b>2. Complete plunger:</b><br>Code R450897   | <b>7. Gasket plug:</b><br>G 1/2 Code R452609<br>G 3/4+G 1 Code R452553                     |
| <b>3. Complete armature tube:</b><br>Code R450606                                       |  |
| <b>4. Sealing ring:</b><br>G 1/2 Code R452607<br>G 3/4 Code R452551<br>G 1 Code R452552 |  |
| <b>5. Gasket cover:</b><br>G 1/2 Code R452608<br>G 3/4+G 1 Code R450858                 |  |

**KIT:**

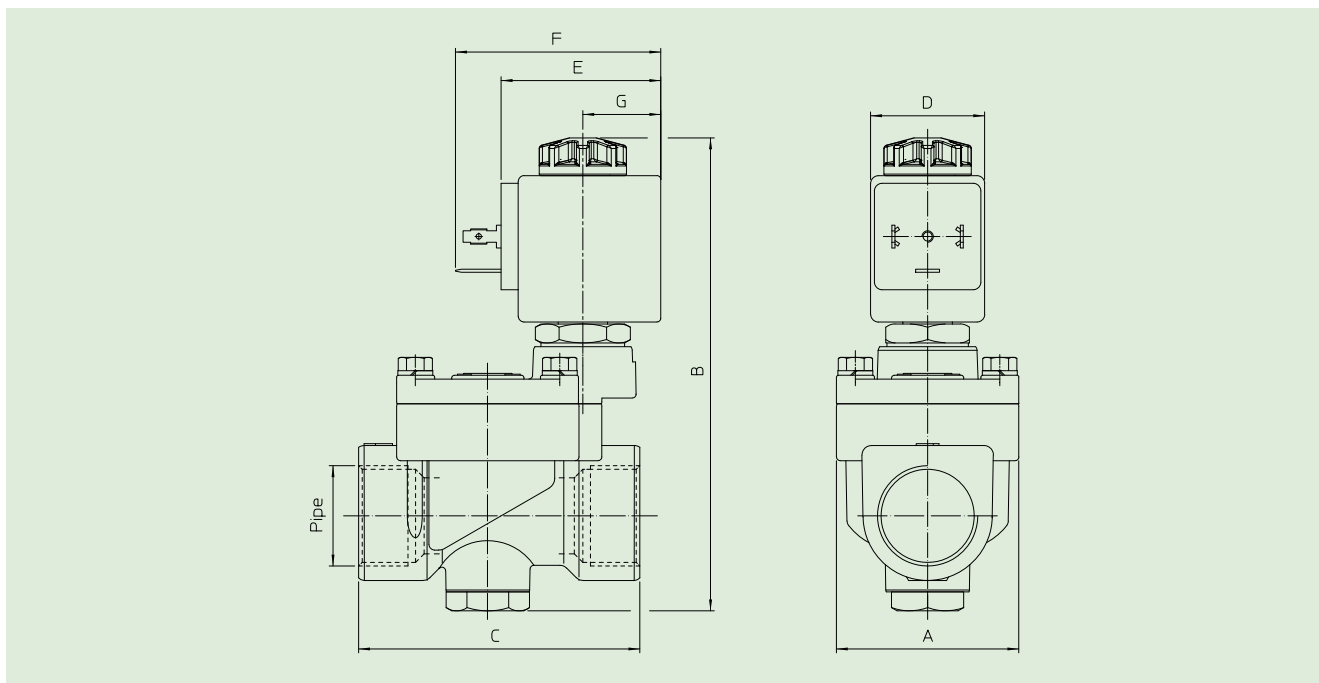
KT130K T30-AGP=2+3

**MAINTENANCE KIT:**

G 1/2 KTPYW4K0T13=2+4+5+6+7  
 G 3/4 KTPYW5K0T19=2+4+5+6+7  
 G 1 KTPYW6K0T25=2+4+5+6+7



**DIMENSIONS:**



Type	Pipe ISO 228/1	A mm	B mm	C mm
21YW4K0T130	G 1/2	40	114	65
21YW5K0T190	G 3/4	48	127	74
21YW6K0T250	G 1	62	137	93

COIL TYPE	POWER ABSORPTION	DIMENSIONS			
	W	D mm	E mm	F mm	G mm
B	8	30	42	54	20,5