



# Solenoid valve 2/2 way N.C. modular With pilot control

4743K0V120

## PRESENTATION:

S.V. with pilot control for interception of fluids compatible with the construction materials.

A minimum operational pressure of 0,1 bar is required.

The materials used and the tests carried out ensure maximum reliability and duration.

**USE:** Car wash

**PIPES:** Inlet flange - G 1/2 outlet

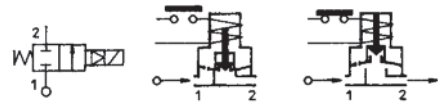
**COILS:**

8W - Ø 13	
BDA -BDS - BSA	155°C (class F)
BDP	160°C (high temperature)
BDF	180°C (class H)
UDA	155°C (class F)

Max. allowable pressure (PS)	20 bar
Environment temperature:	
with class <b>F</b> or high temperature coils	- 10°C + 60°C
with class <b>H</b> coil	- 10°C + 80°C



Gaskets	Temperature		Medium
V=FKM (fluoroelastomer)	- 10°C	+140°C	Water



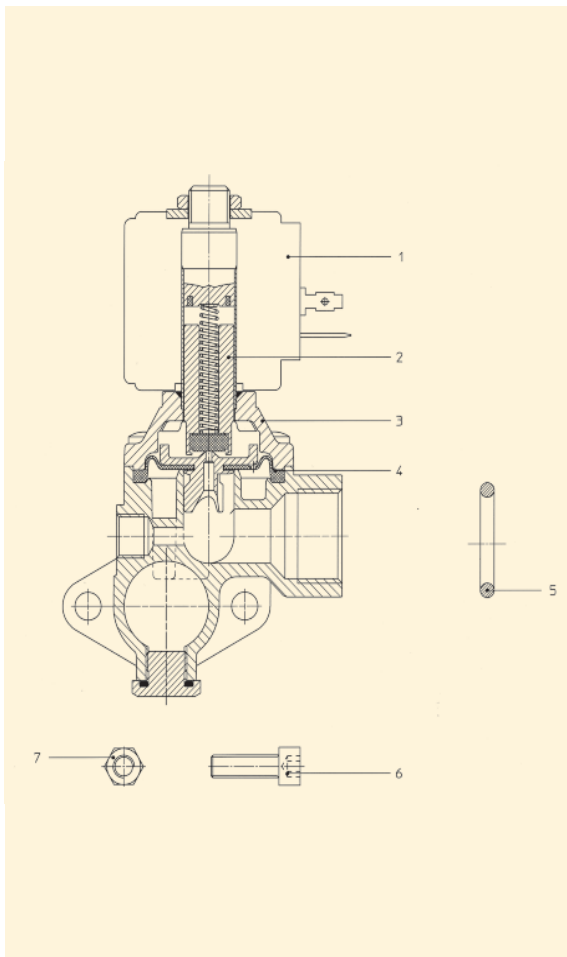
Pipe	Code	Max viscosity		Ø mm	Kv l/mn	Power (watt)	Pressure		
		cSt	°E				min bar	M.O.P.D. AC bar DC bar	
FLANGE	4743K0V120	12	~ 2	12	40	8	0,1	16	10
						12		-	16

SPECIAL ITEM-NOT STANDARD

## Note

Available on request and with minimum quantities.

The "ODE" reserves the right to carry out technical and aesthetic modifications without prior notification.



**MATERIALS:**

- Body** Brass - UNI EN 12165 CW617N
- Welded armature tube** Stainless steel AISI series 300
- Fixed core** Stainless steel AISI series 400
- Plunger** Stainless steel AISI series 400
- Phase displacement ring** Copper - Cu 99,9%
- Spring** Stainless steel AISI series 300
- Seal** V=FKM
- Orifice** Brass - UNI EN 12165 CW617N

**On request:**

- Connector** Pg 9 or Pg 11
- Connector conformity** ISO 4400

**FEATURES:**

- Electrical conformity** IEC 335
- Protection degree** IP 65 EN 60529 (DIN 40050) with coil fitted by connector.

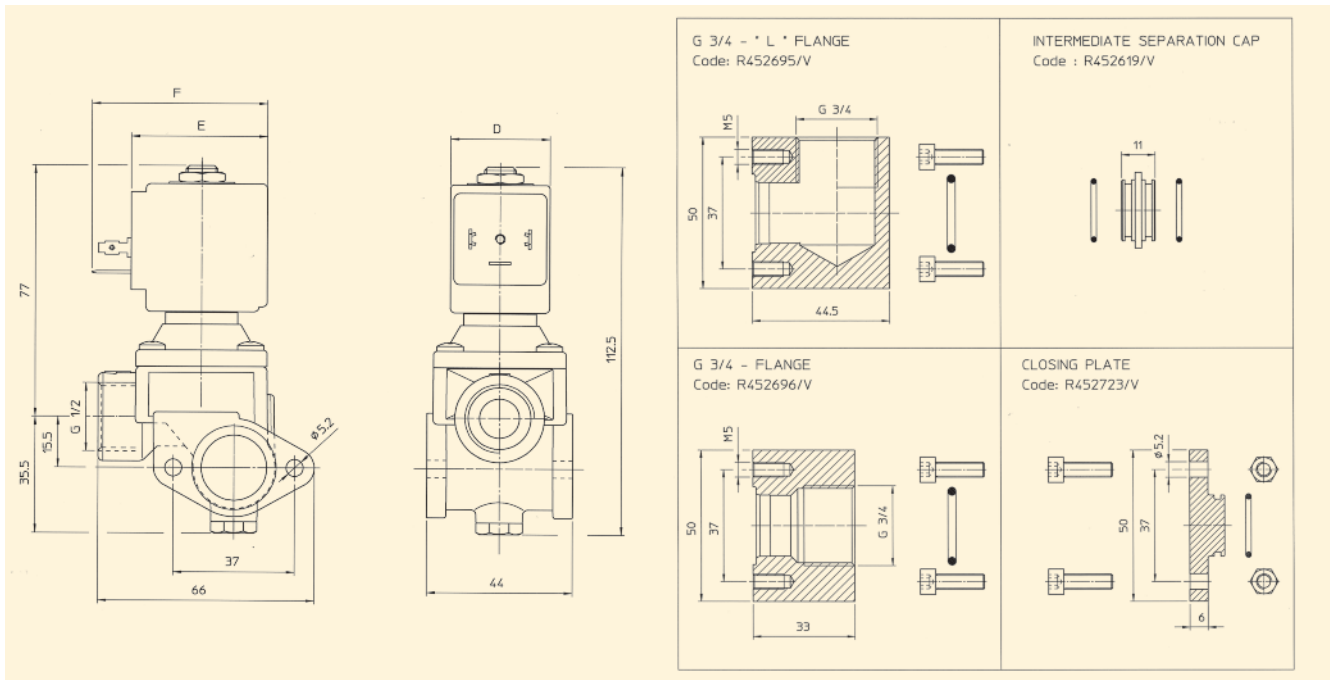
**SPARE PARTS:**

- 1. Coil:** See coils list
- 2. Complete plunger:** Code R451284/V
- 3. Complete cover with armature tube:** Code R450938
- 4. Complete diaphragm:** Code R450916/V
- 5. Guarnizione O-Ring:** Code 990146/V
- 6. Screw M5x16:** Code R990455
- 7. Nut M5x4:** Code R990468

**MAINTENANCE KIT:**

KTG0H7KV12=2+4

**DIMENSIONS:**



COIL	POWER ABSORPTION		TYPE	DIMENSIONS		
	Inrush VA ~	Hold VA ~		D mm	E mm	F mm
8 W	25	14,5	B	30	42	54
12 W	35	25	U	36	48	60